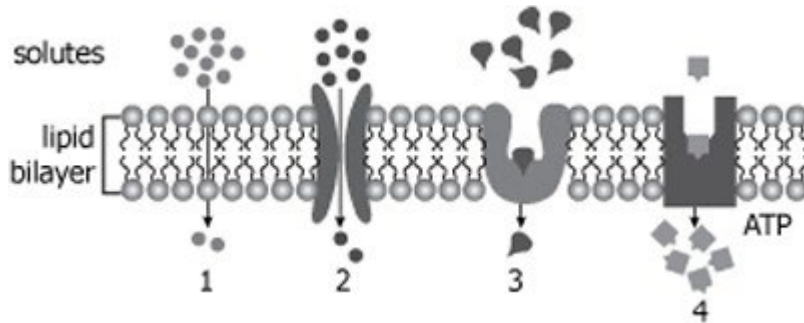


Biology Parent-Student Assessment Practice Questions

Question 1

Some molecules of a solute are being transported by different mechanisms across a selectively permeable membrane as shown in the diagram below.

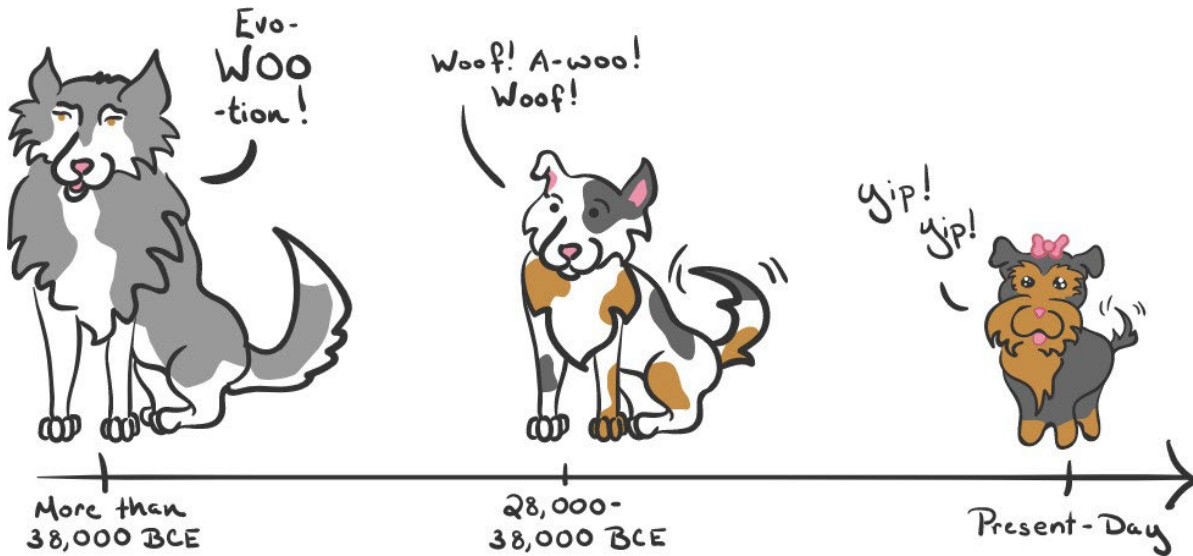


Which statement is correct regarding the transport of solute molecules across the selectively permeable membrane?

- A Molecules 1, 2, and 3 represent passive transport; molecule 4 represents active transport.
- B Molecules 1, 2, and 3 represent active transport; molecule 4 represents passive transport.
- C Molecules 1 and 2 represent passive transport; molecules 3 and 4 represent active transport.
- D Molecules 1 and 2 represent active transport; molecules 3 and 4 represent passive transport.

Over thousands of years, the genetic makeup of organisms' change. For example, thousands of years ago, early human beings came in contact with wolves. Some wolves were tame and were caught by the humans. Humans started breeding the calm and tame wolves with each other. Over a long period of time a new species was created that became the dogs we all know and love today.

Question 2



Choose the statement below that best describes the process described.

- A Natural selection: the process of a species changing over time in response to changes in the environment
- B Artificial Selection: the process of a species changing over time as the result of human intervention
- C Overproduction: the process of producing more offspring to increase the chance some will survive as the result of the high number of offspring
- D Stabilizing selection: the process of the average number of species in a population becoming the dominant one.

Biology Parent-Student Assessment Practice Questions

Answer Key

Standard	Question	Answer
Bio1.LS1.7	1	A
BIO1.LS4.2	2	B